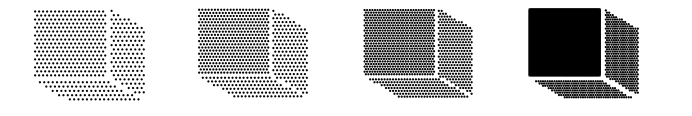


Consultants



**SHEPHERD ENGINEERING, INC.**  
ELECTRICAL CONSULTANTS  
1308 GRAFTON STREET  
WORCESTER, MASSACHUSETTS 01604  
PHONE: (508) 757-7793 \* FAX: (508) 753-2309  
REFERENCE NO.: 18110

77 Maple Street  
SPRINGFIELD, MA

Floor Plans - Fire Alarm

Revisions:


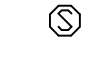
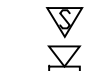
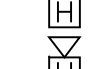


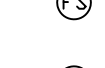



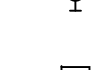
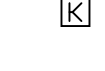
Date 10-18-2018  
File Name 77 Maple Street  
Drawn By A JV  
Reviewed By JDS  
Scale 1/8"=1'-0"

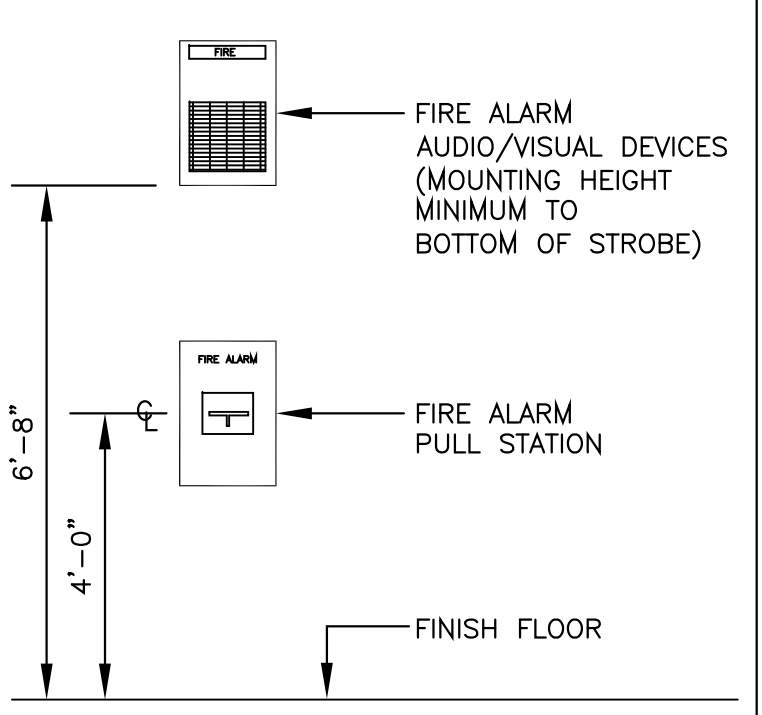
Drawing No.

**FA.1**

of

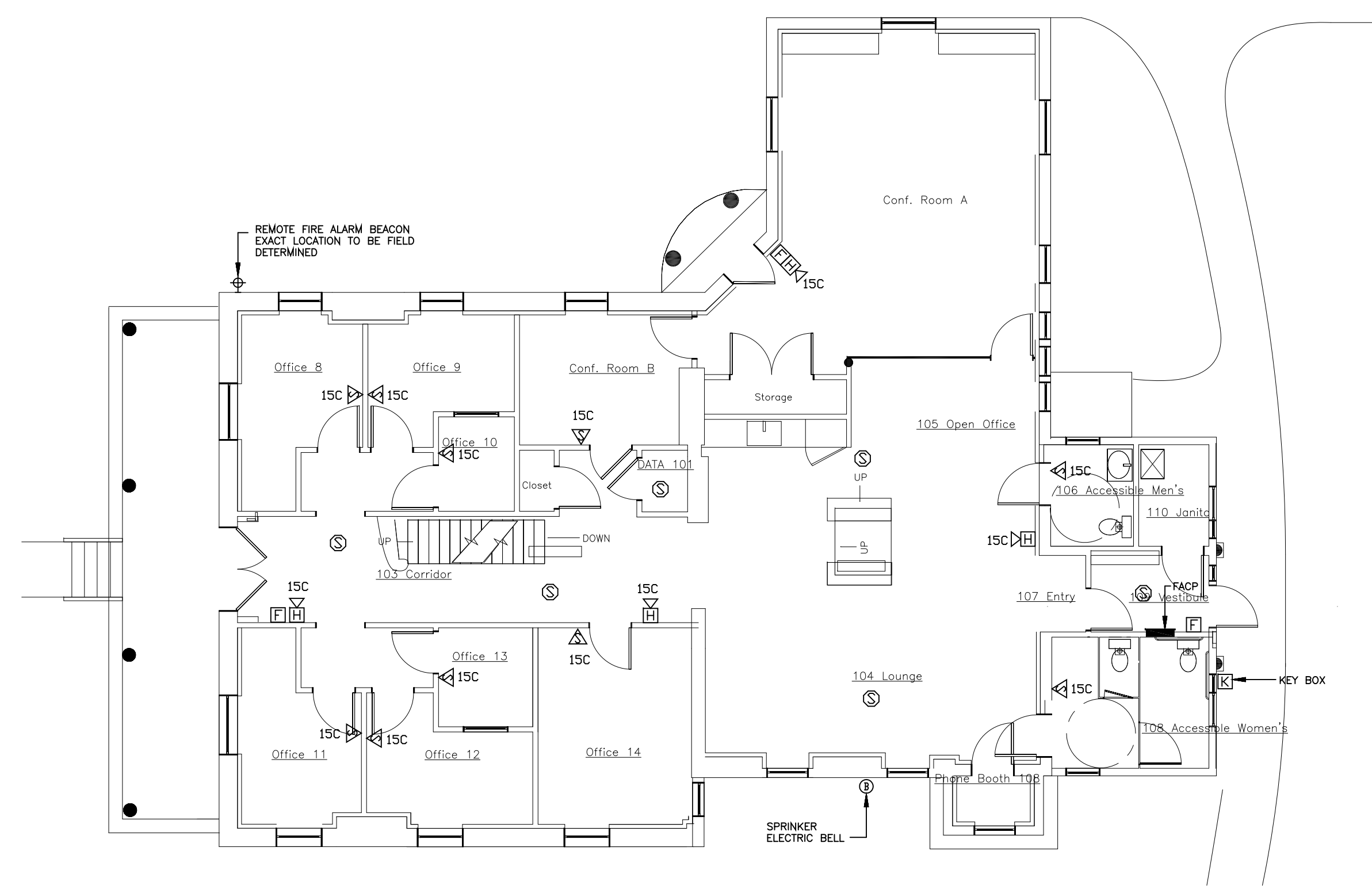
**LEGEND**

-  PULL STATION
-  PHOTO-ELECTRIC SMOKE DETECTOR
-  STROBE
-  HORN/STROBE
-  HORN/STROBE (CEILING MOUNTED)
-  FIRE ALARM CONTROL PANEL
-  FLOW SWITCH
-  TAMPER SWITCH
-  LOW PRESSURE SWITCH
-  AIR PRESSURE SWITCH
-  FIRE ALARM BEACON
-  FIREFIGHTERS KEY BOX

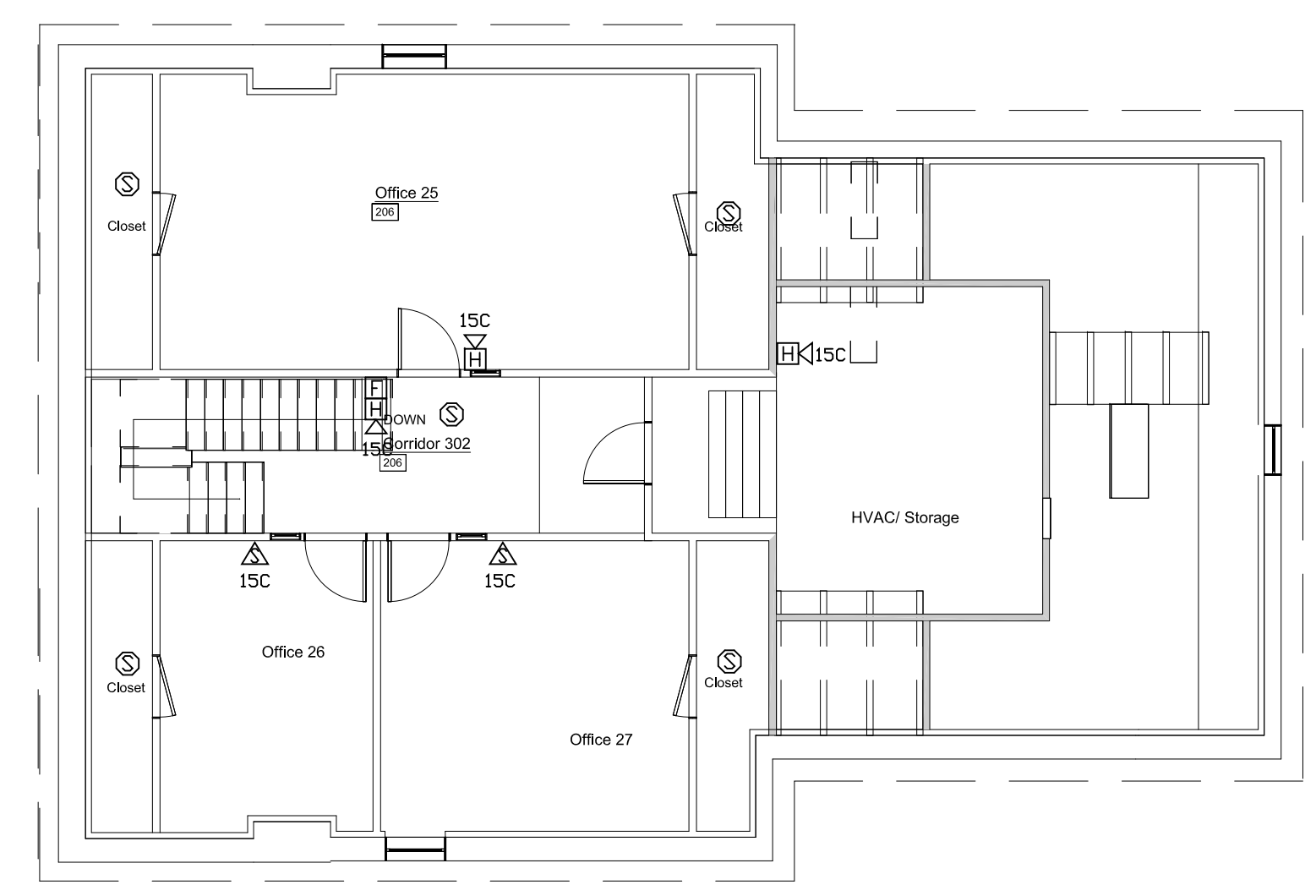


**DEVICE LOCATION HEIGHTS**  
NOT TO SCALE

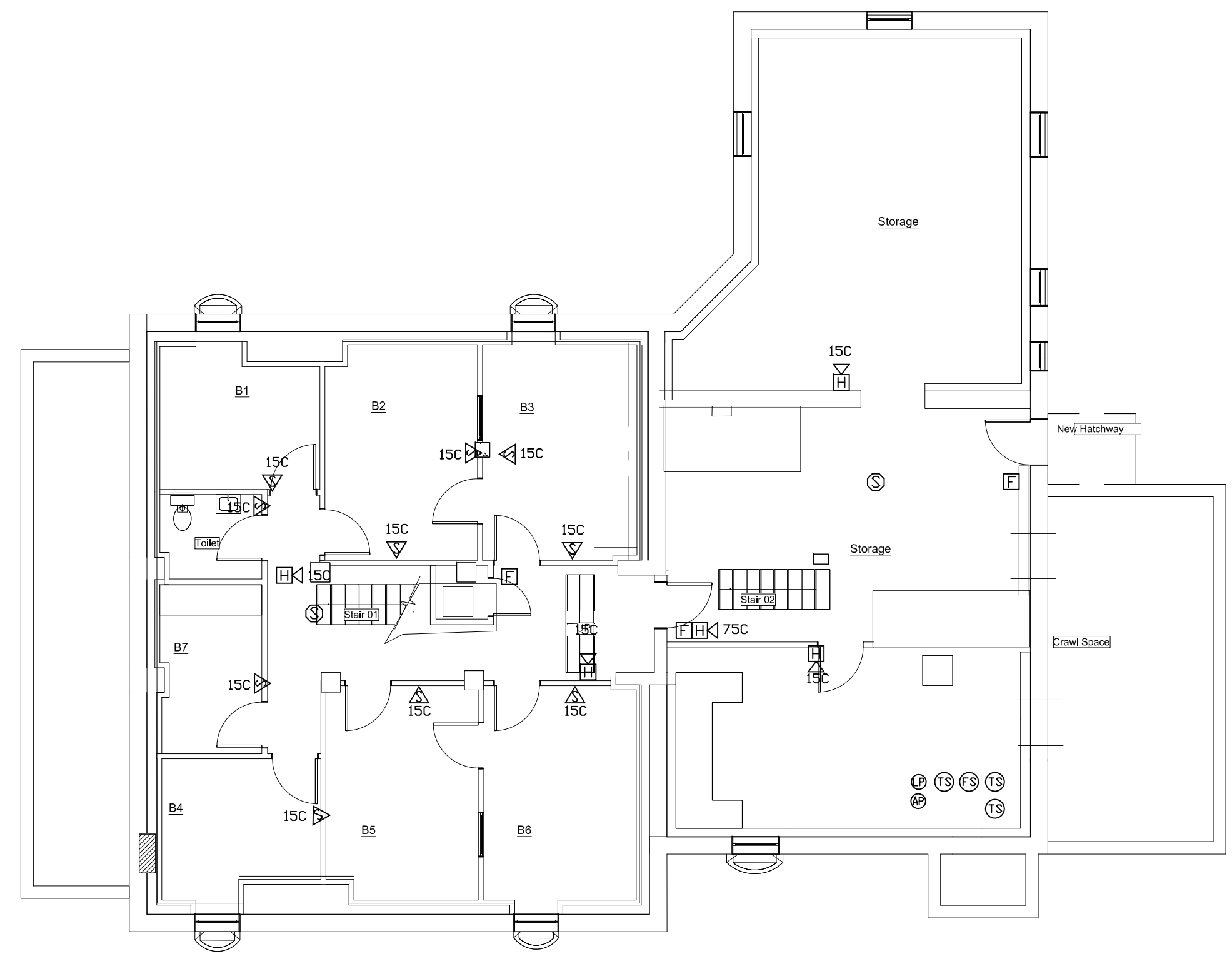
**NOTES:**  
ALL MOUNTING HEIGHTS SHALL BE MEASURED FROM THE FINISH FLOOR TO THE CENTERLINE OF THE DEVICE EXCEPT FIRE ALARM A/V DEVICES.  
DEVICES SHALL BE INSTALLED ON A COMMON VERTICAL CENTERLINE WHEREVER POSSIBLE.  
ALL DEVICES SHALL BE INSTALLED AT MOUNTING HEIGHTS AS INDICATED ON THIS DEVICE UNLESS OTHERWISE NOTED.  
STROBE HEIGHT ILLUSTRATED AT MAXIMUM HEIGHT. STROBE SHALL BE 80" AFF OR 6" BELOW CEILING, WHICHEVER IS LOWER.



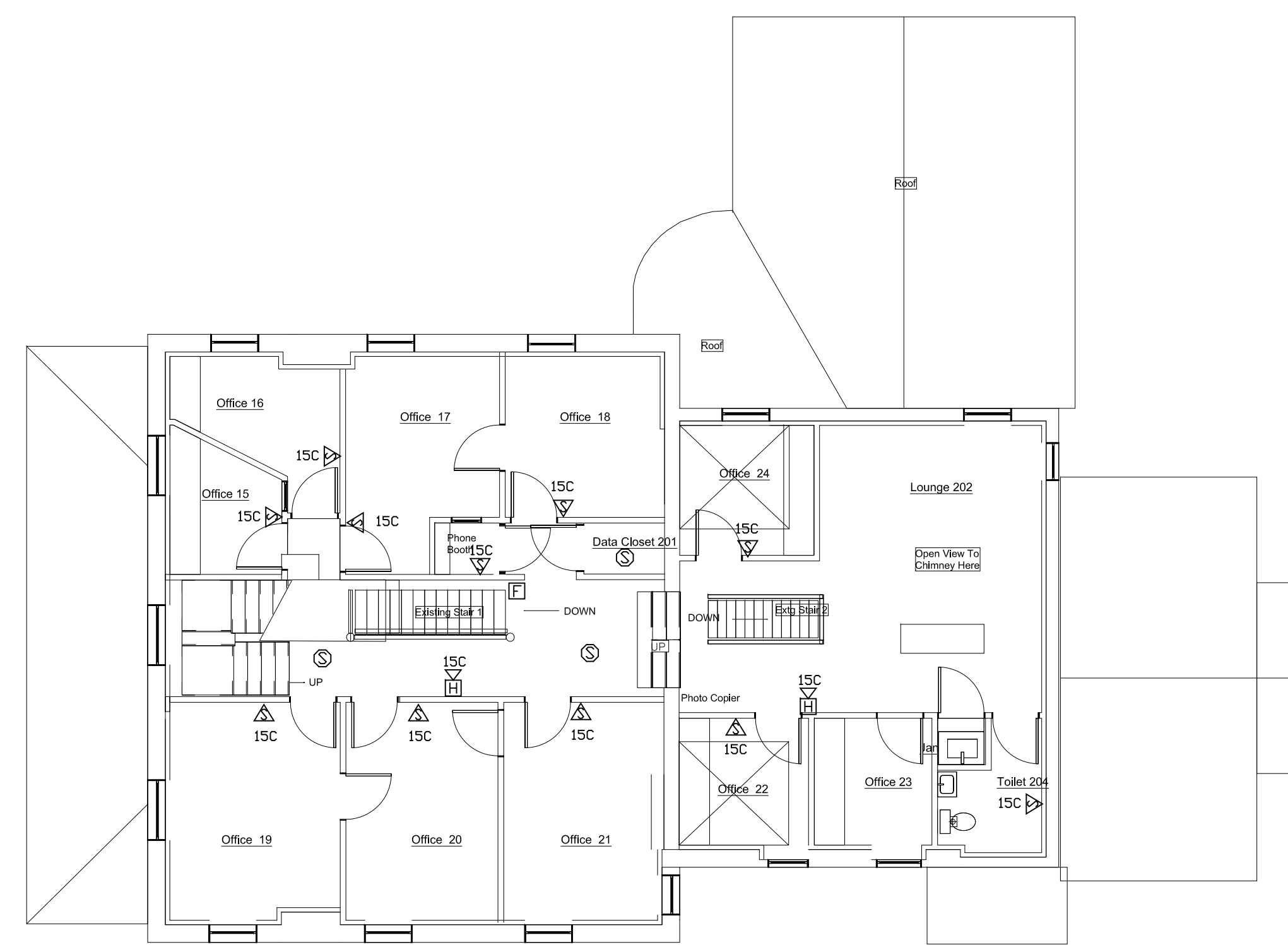
**FIRST FLOOR PLAN - FIRE ALARM**  
Scale: 1/8"=1'-0"



**THIRD FLOOR PLAN - FIRE ALARM**  
Scale: 1/8"=1'-0"



**BASEMENT FLOOR PLAN - FIRE ALARM**  
Scale: 1/8"=1'-0"



**SECOND FLOOR PLAN - FIRE ALARM**  
Scale: 1/8"=1'-0"