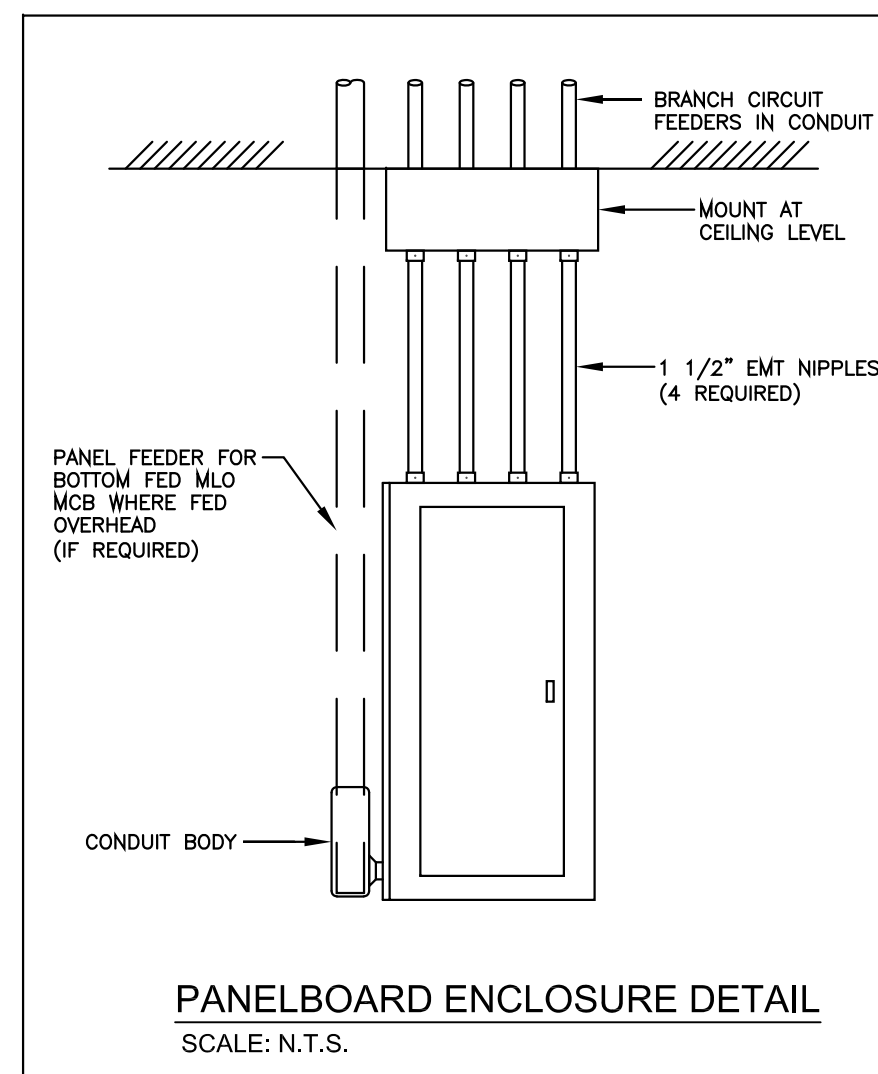


PANEL: PB				TYPE: EATON CO. OR EQUAL TWO SECTION			
MAIN: 200A MLO				TYPE: EATON CO. OR EQUAL TWO SECTION			
VOLTAGE: PHASE: WIRE:				TYPE: EATON CO. OR EQUAL TWO SECTION			
CIR	DESCRIPTION	TRIP	POLE	CIR	DESCRIPTION	TRIP	POLE
1	OFFICE B3	20	1	2	OFFICE B1, B2	20	1
3	OFFICE B6	20	1	4	OFFICE B5	20	1
5	OFFICE B4, B7	20	1	6	CORRIDOR RECEPT.	20	1
7	STORAGE RM. RECEPT.	20	1	8	OFFICE B1, B2, B3 LTG	20	1
9	OFFICE B4-B7 LTG	20	1	10	STOR. RM. LTG	20	1
11	OFFICE/TOILET/LTG	20	1	12	OFFICE 15-18, 24	20	1
13	CORR./LOUNGE LTG	20	1	14	TOILET RMS. 106, 108	20	1
15	LOUNGE 104	20	1	16	CONF. RM. 106	20	1
17	KITCHEN REFRIG	20	1	18	KITCHEN	20	1
19	KITCHEN	20	1	20	KITCHEN	20	1
21	DATA RM.	20	1	22	DATA RM.	20	1
23	DATA RM.	20	1	24	DATA RM.	20	1
25	CONF. RM. B	20	1	26	OFFICE 9, 10	20	1
27	OFFICE B	20	1	28	CORR. RECEPT.	20	1
29	SPARE	20	1	30	OFFICE 11	20	1
31	OFFICE 12, 13	20	1	32	OFFICE 14	20	1
33	COPIER	20	1	34	COPIER	20	1
35	TOILET RM. LTS	20	1	36	CONF. A /LOUNGE LTS	20	1
37	OFFICE LTS	20	1	38	CORR. LTS	20	1
39	OFFICE HEAT PUMP	15	2	40	HPB 30, C12	15	2
41	OFFICE HEAT PUMPS	15	2	42	SUMP PUMP/SEWERAGE PUMP	20	1
43	OFFICE HEAT PUMPS	15	2	44	SPRINKLER COMPRESSOR	20	1
45	WATER HEATER/RECIRC. PUMP	20	1	46	FIRST FL. OFFICE HP	15	2
47	FIRST FL OFFICE HP	15	2	48	CONF RM A/LOUNGE	15	2
49	MEN/JAN. RM A/LOUNGE	20	1	50	SPARE	20	1
51	WOMENS RM EBB	20	1	52	BASEMENT COPIER	20	1
53	SECURITY	20	1	54	TC2	20	1
55	TCT/EXT LTS	20	1	56	SPARE	20	1
57	COPIER	20	1	58	SPARE	20	1
59	SPARE	20	1	60	SPARE	20	1
61	SPARE	20	1	62	SPARE	20	1
63	SPARE	20	1	64	SPARE	20	1
65	SPARE	20	1	66	SPARE	20	1
67	SPARE	20	1	68	SPARE	20	1
69	SPARE	20	1	70	SPARE	20	1
71	SPARE	20	1	72	SPARE	20	1
73				74			
75				76			
77				78			
79				80			
81				82			
83	PROVISIONS FOR FUTURE			84	PROVISIONS FOR FUTURE		

PANEL: P3				TYPE: EATON CO. OR EQUAL			
MAIN: 200A MLO				TYPE: EATON CO. OR EQUAL			
VOLTAGE: PHASE: WIRE:				TYPE: EATON CO. OR EQUAL			
CIR	DESCRIPTION	TRIP	POLE	CIR	DESCRIPTION	TRIP	POLE
1	OFFICE 23	20	1	2	OFFICE 22	20	1
3	OFFICE 21	20	1	4	OFFICE 20	20	1
5	OFFICE 19	20	1	6	OFFICE 15,16	20	1
7	OFFICE 17	20	1	8	OFFICE 18	20	1
9	OFFICE 24	20	1	10	LOUNGE 202	20	1
11	CORR.	20	1	12	OFFICE 15-18, 24 LTG	20	1
13	CORR. LTS	20	1	14	OFFICE 19-23	20	1
15	HVAC/STOR. LTS	20	1	16	CORR. LTS	20	1
17	OFFICE LTS	20	1	18	OFFICE 25	20	1
19	OFFICE 25	20	1	20	OFFICE 26	20	1
21	OFFICE 26	20	1	22	TOILET 204 EBB	20	1
23	2ND FLOOR OFFICE HP4	15	2	24	2ND FLOOR OFFICE HP4	15	2
25	3RD FLOOR OFFICE HP3/4	15	2	26	3RD FL ERV-1	20	1
27	3RD FLOOR OFFICE HP3/4	15	2	28	3RD FL ERV-2	20	1
29	SPARE	20	1	30	SPARE	20	1
31	SPARE	20	1	32	SPARE	20	1
33	SPARE	20	1	34	SPARE	20	1
35	SPARE	20	1	36	SPARE	20	1
37	SPARE	20	1	38	SPARE	20	1
39	SPARE	20	1	40	SPARE	20	1
41	SPARE	20	1	42	SPARE	20	1

PANEL: MD		TYPE: EATON CO. OR EQUAL SURFACE	
MAIN: 400A (MLO)		TYPE: EATON CO. OR EQUAL SURFACE	
VOLTAGE: 120/208V		TYPE: EATON CO. OR EQUAL SURFACE	
	PHASE: 3		WIRE: 4
1	PANEL PB 125A/3P	2	PANEL P3 125A/3P
3	HP-1 90A/3P	4	HP-2 90A/3P
5	SPARE 100A/3P	6	PROVISIONS FOR FUTURE
7	PROVISIONS FOR FUTURE	8	PROVISIONS FOR FUTURE
9	PROVISIONS FOR FUTURE	10	PROVISIONS FOR FUTURE
11	PROVISIONS FOR FUTURE	12	PROVISIONS FOR FUTURE

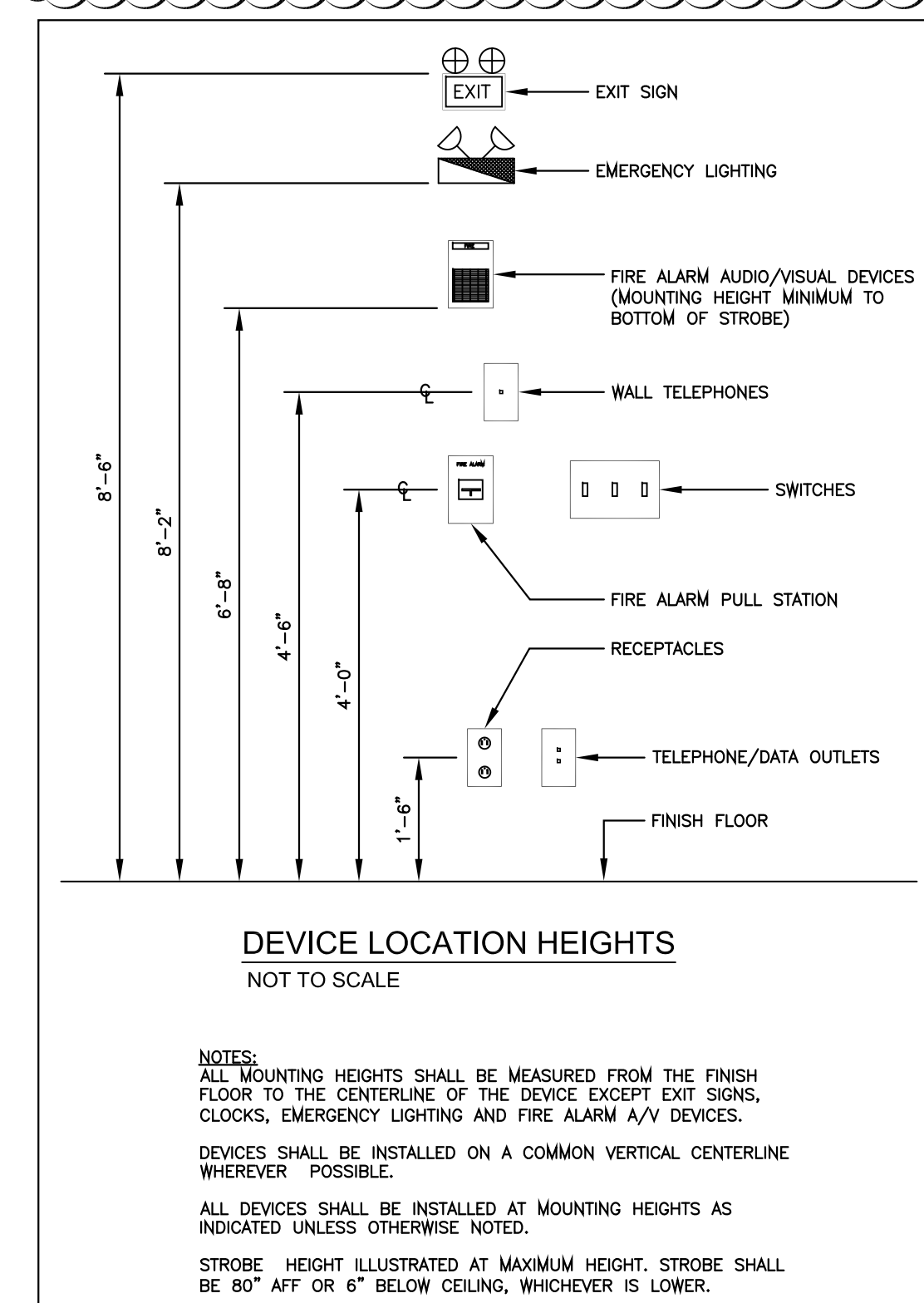
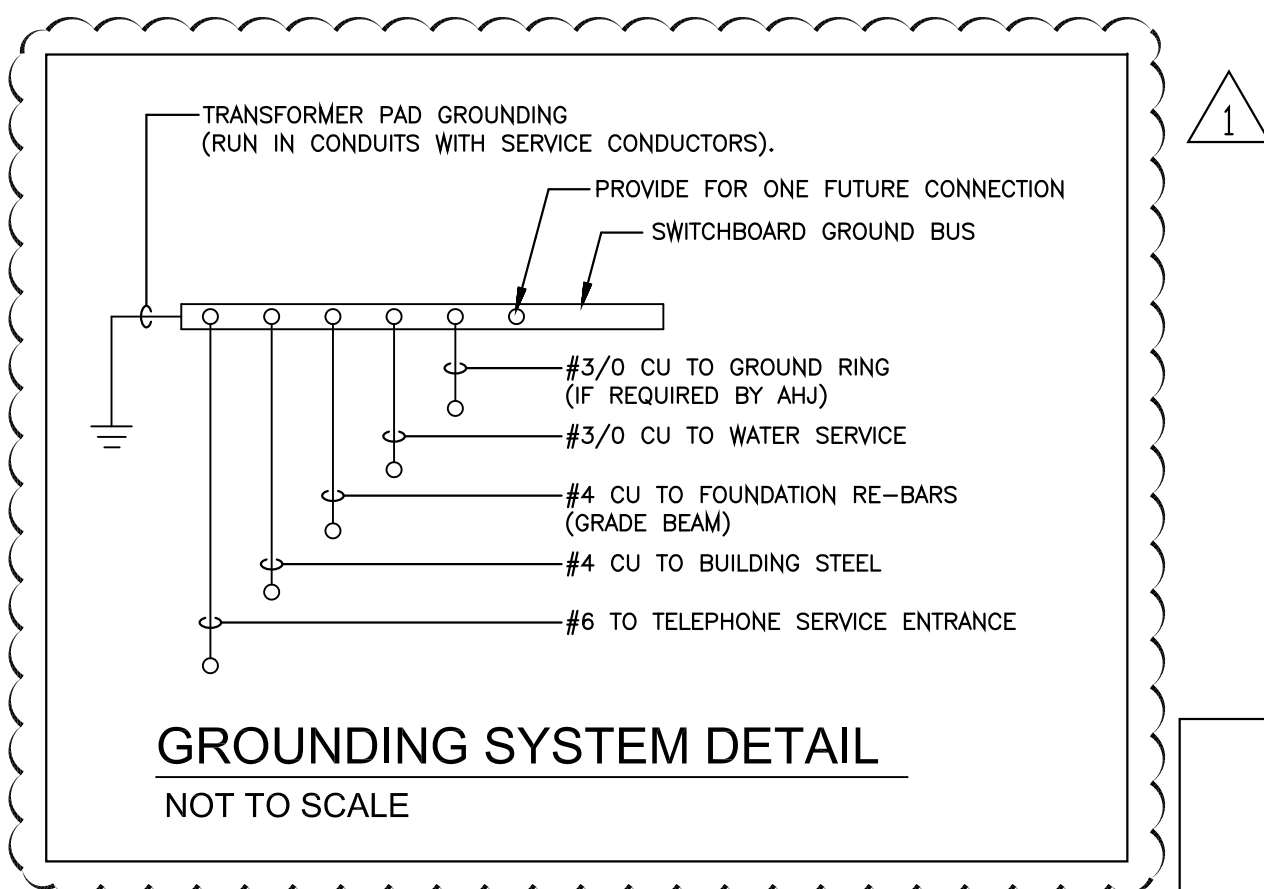


NOTE: FIXTURES A4/A8
CONFIRM ALL FIXTURES WHICH REQUIRE THROUGH WIRE FEEDS WHEN CONNECTED IN TANDEM.

NOTE:
BETWEEN EACH DIMMED LIGHTING CIRCUIT, FURNISH AND INSTALL A 2C#18 GRAY AND VIOLET 0-10VOLT DIMMING CONTROL CABLE BETWEEN EACH LIGHT FIXTURE AND RELATED DIMMER SWITCH.

NOTE: EQUAL MANUFACTURERS

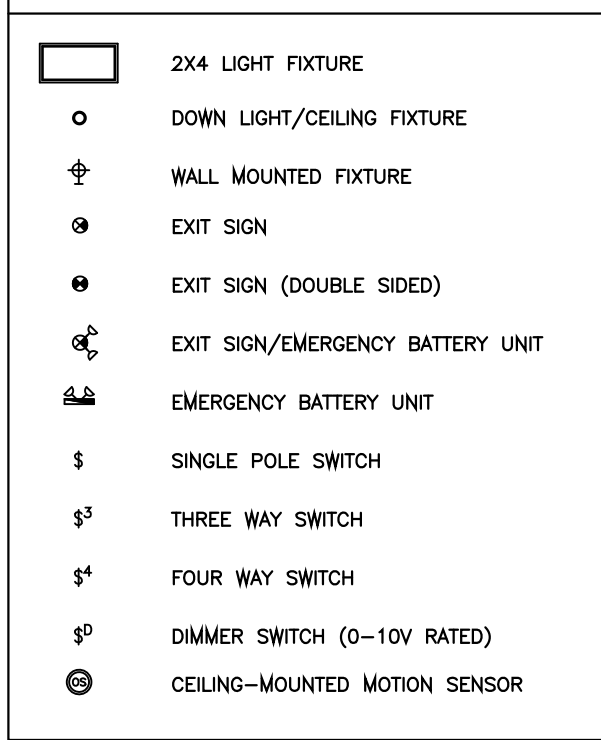
- A4 PHILIPS LTG, LEDALITE
- A8 PHILIPS LTG, LEDALITE
- B PHILIPS LTG, LITHONIA
- C PHILIPS LTG, LITHONIA
- D PORTFOLIO, CSL
- E SURE-LITES, MULE
- F METALUX, PHILIPS LTG
- G PHILIPS LTG, LITHONIA
- H SPI, PHILIPS LTG
- J HALO, CSL
- K PHILIPS LTG, SPI
- AA ELK LG, CORNERSTONE LTG
- BB PORTFOLIO, CSL
- CC ELK LG, CORNERSTONE LTG
- DD PHILIPS LTG, MCGRAW EDISON
- EX1 SURE-LITES, MULE
- EX SURE-LITES, MULE
- EX2 SURE-LITES, MULE
- EB SURE-LITES, MULE



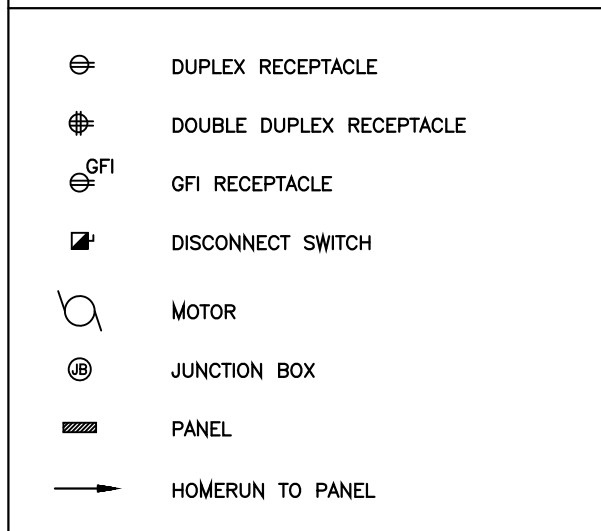
LIGHTING FIXTURE SCHEDULE

TYPE	MANUFACTURER	CATALOGUE #	LAMPING			MOUNTING	REMARKS
			TYPE	WATTAGE	QUANTITY		
A4	STARPOWER	SPN14S35ADU(DLC)	LED	26.5		SURFACE	
A8	STARPOWER	SPN18S35KADU(DLC)	LED	52.9		SURFACE	
B	OXYGEN	3-575-24	LED	14.6		WALL	VANITY LIGHT
C	METALUX	4SNLEDL0550SLLWUNVBLBERMS360L835CD1U	LED	46.0		SURFACE	INTERNAL OCCUPANCY SENSOR
DE	ALPHABET	NU4RDXTM1930LM35K83HE60120DIM10NCWHWHM7ITS	LED	36.5		RECESSED	INTERNAL EMERGENCY DRIVER
D	ALPHABET	NU4RDXTM1930LM35K83HE60120DIM10NCWHWHM7ITS	LED	36.5		RECESSED	
E	ISOLITE	ELEDEM-COLOR-CD1	LED			WALL	EXTERIOR EMERGENCY LIGHT
F	CSL	NCALED32	LED	18.0		SURFACE	UNDERCABINET LIGHT
G	METALUX	2SNLEDL0523SLLWUNVBLBERMS360L835CD1U	LED	21.0		SURFACE	
H	SHAPER	16412WL2835UNVTC16412XXXX	LED	14		WALL	WALL SCONCE
I	NONE						
J	BRUCK LTG	137418XTM1920KLM27K98DA4012010VCOLORMPFR	LED	19.2		CANOPY	
K	SHAPER	122224SL5/835UNVWM12224 XX-XX	LED	40		SURFACE	
AA	THOMAS LTG	8411EW/70	LED	4.5		WALL	LED - VERBATIM LAMP #A19L450C27DCLF
BB	ALPHABET	NU6RDXTM1930LM35K83HE60120DIMIONCWHWHM7ITS	LED	36.5		RECESSED	EXTERIOR CANOPY LIGHT
CC	THOMAS LTG	8411EH/70	LED	4.5		PENDANT	LED - VERBATIM LAMP #A19L450C27DCLF
DD	LUMARK	AXCL8A-COLOR-PC1	LED	72		WALL	EXTERIOR WALL LIGHT
EX1	ISOLITE	RLPRUWHUNSD	LED			UNIV	EXIT SIGN WITH TWO HEADS
EX	ISOLITE	EUGEMR1CUN	LED			UNIV	EXIT SIGN
EX2	ISOLITE	EUGEMR2MUN	LED			UNIV	EXIT SIGN - DOUBLE SIDED
EB	ISOLITE	RL2LED2WHSD	LED			WALL	EMERGENCY BATTERY UNIT

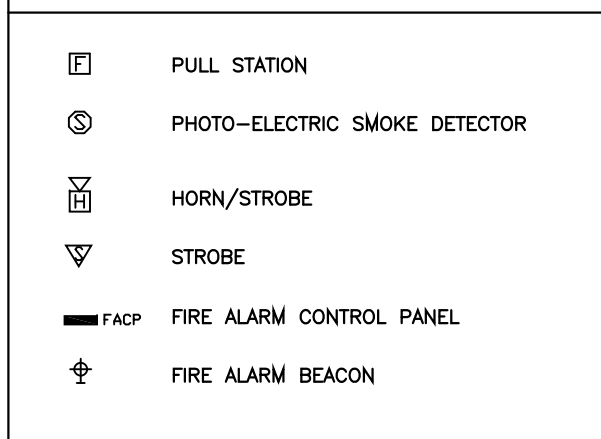
LIGHTING LEGEND



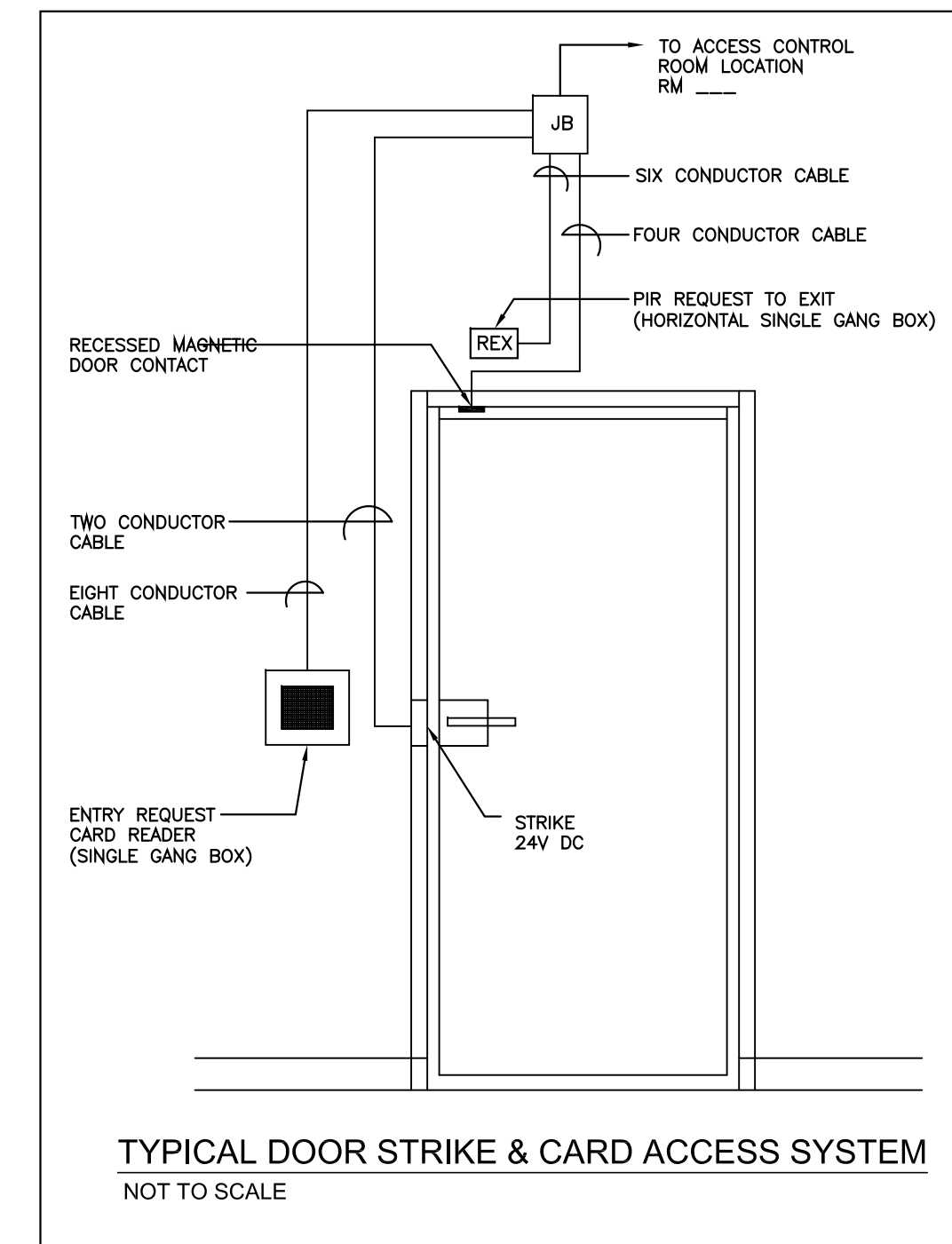
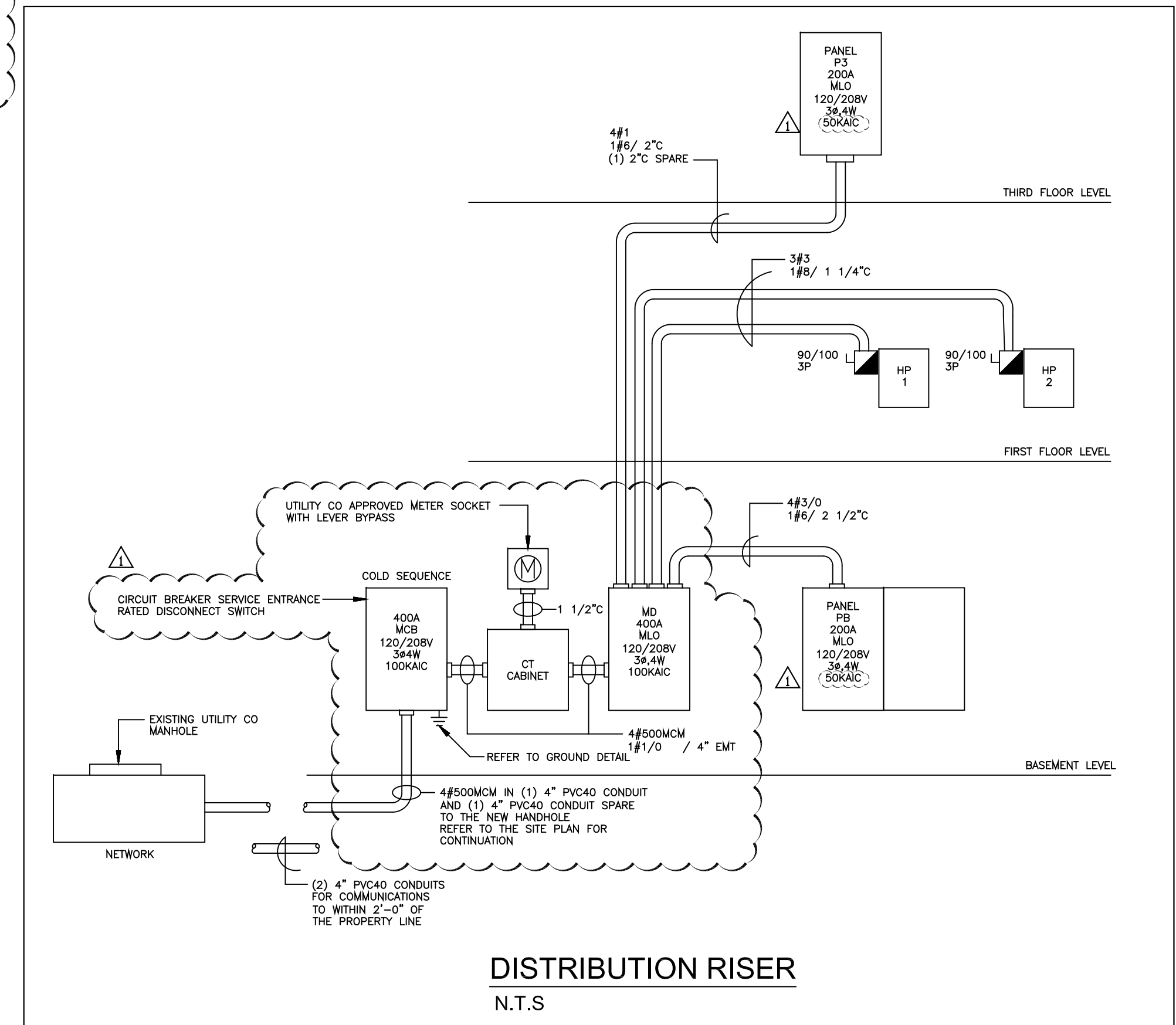
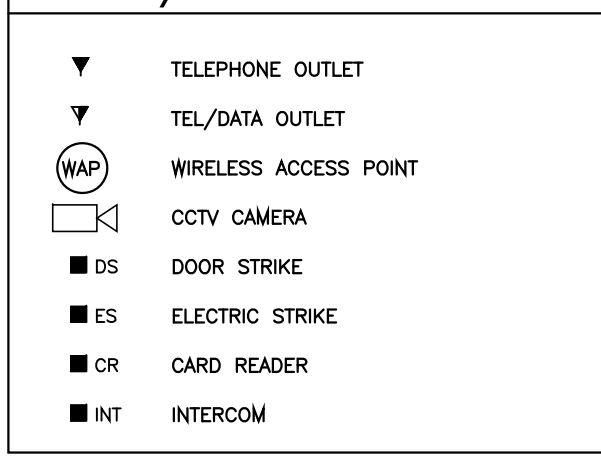
POWER LEGEND



FIRE ALARM LEGEND



TEL/DATA LEGEND

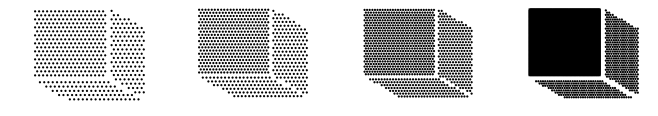


JABLONSKI | DEVRIESE ARCHITECTS
www.jdarchitects.com

member: American Institute of Architects

29 Elliot Street | Springfield, MA 01105
T 413.747.5285

Consultants



SHEPHERD ENGINEERING, INC.
ELECTRICAL CONSULTANTS

1308 GRAFTON STREET
WORCESTER, MASSACHUSETTS 01604

PHONE: (508) 757-7793 * FAX: (508) 753-2309
REFERENCE NO.: 18110

77 Maple Street
SPRINGFIELD, MA

Legend, Schedules & Details

Revisions:
ELECTRICAL REVISIONS 12/10/18

Date 10-18-2018
File Name 77 Maple Street
Drawn By AJV
Reviewed By JDS
Scale N.T.S.

Drawing No.

E5.1

of